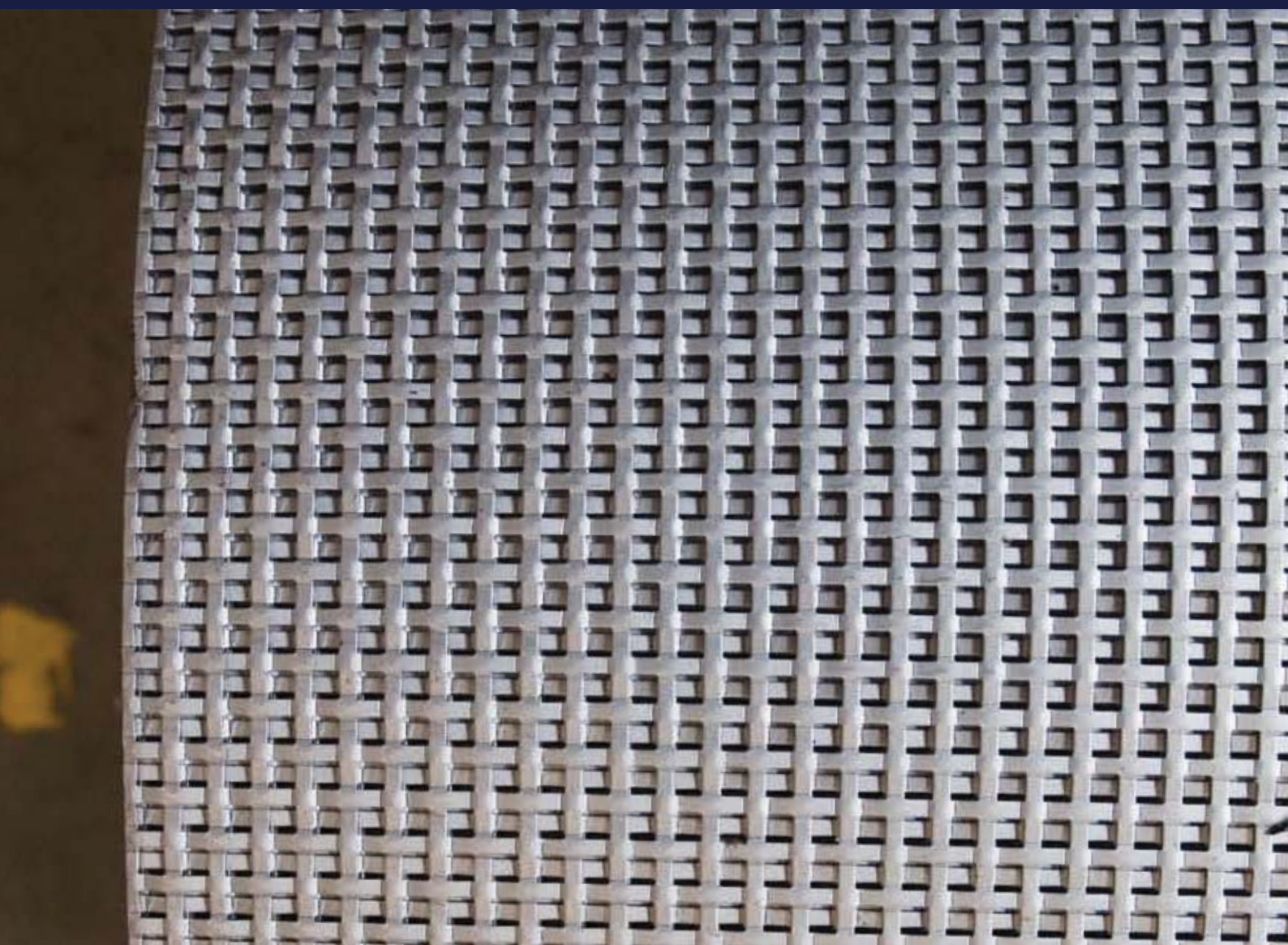


# GATTI PRECORVI

L A M I E R E F O R A T E

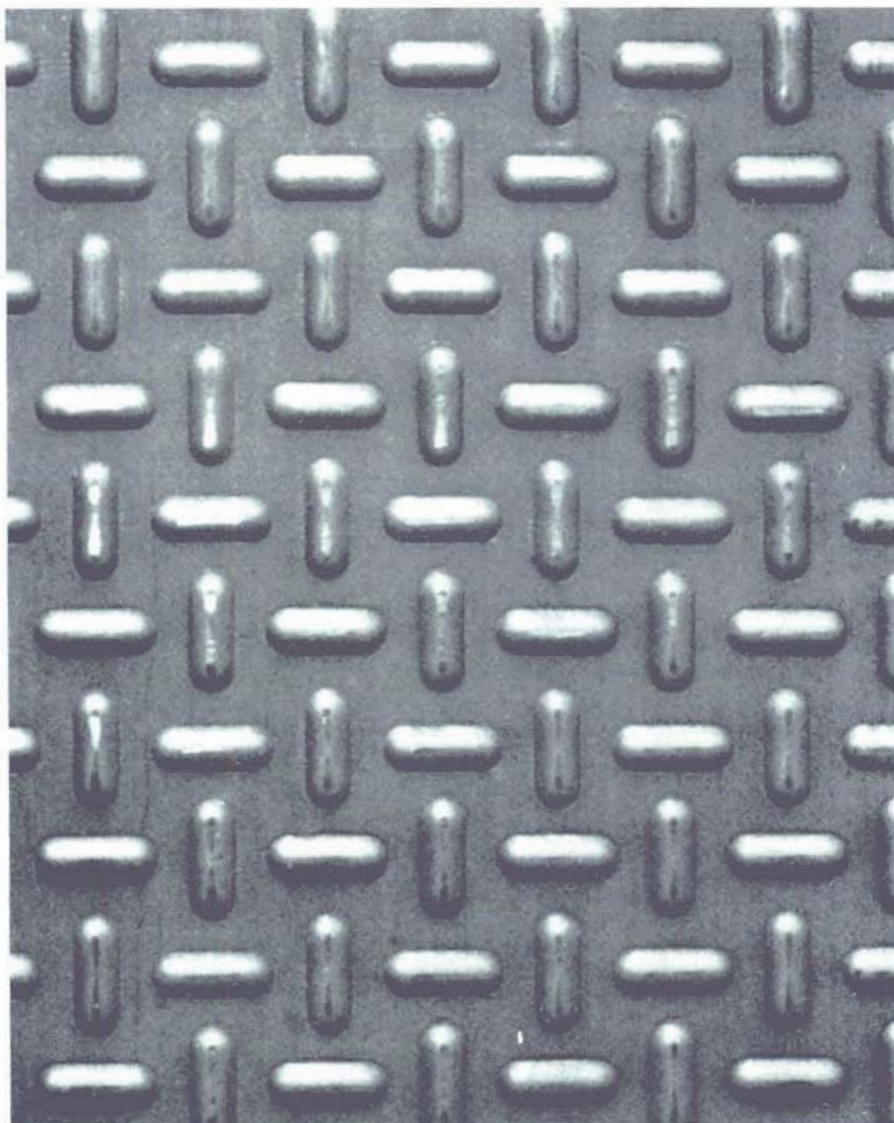


## LAMIERE BUGNATE





**LAMIERE BUGNATE**  
**EMBOSSED PLATES**  
**WAFFELBLECHE**  
**TÔLES GAUFFREES**

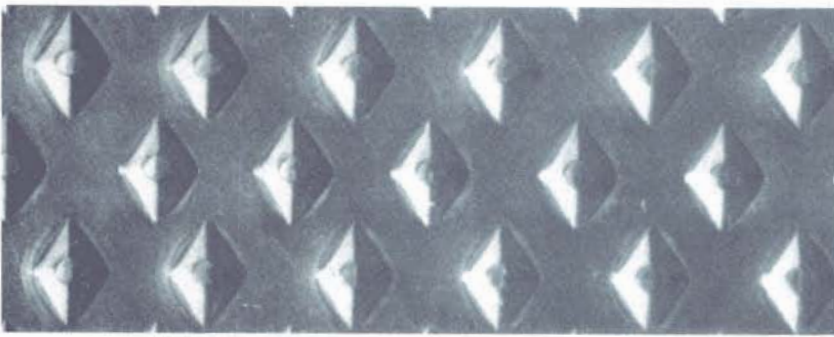


Le nostre LAMIERE BUGNATE vengono ottenute mediante punzonatura, eseguita su normali lamiere piane o su nastri. Lo spessore varia generalmente da un minimo di mm. 0,30 a un massimo di mm. 5. Il formato di serie è mm. 2000x1000 ma si possono eseguire moltissimi altri formati. Le lamiere bugnate trovano impiego per camminamenti, gradini, pavimentazioni, ecc. nell'industria e anche nell'arredamento.

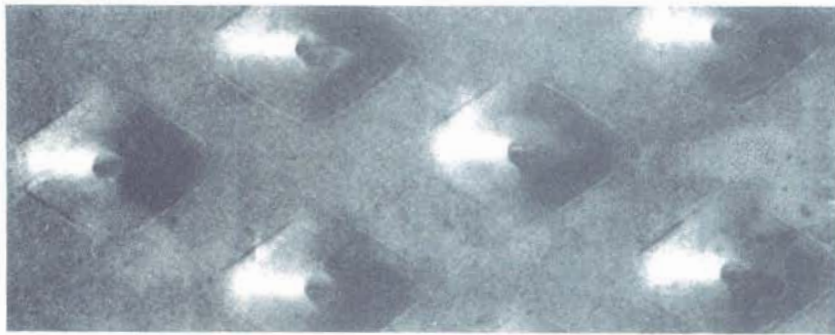
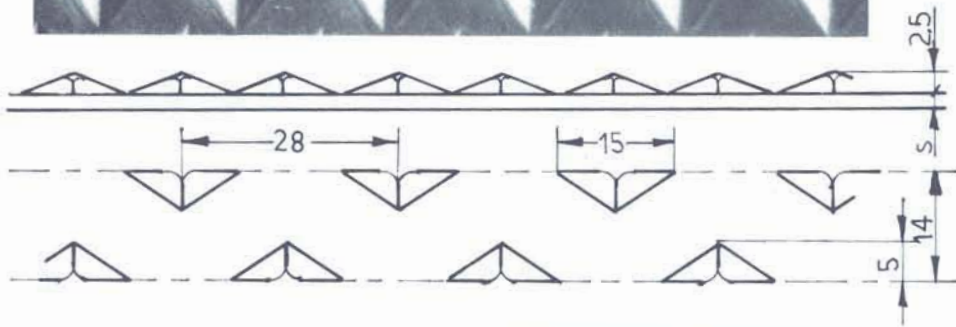
*Our EMBOSSED PLATES are made by slugging standard metal plates or coils. The thickness ranges between a minimum 0,30 mm. and a maximum of 5 mm. Their standard size is 2000x1000 mm., but we can make a lot of other sizes. The embossed plates can have employment for gangways, stairs, floors, etc. for industrial applications and furnishing too.*

Unsere WAFFELBLECHE werden angefertigt durch Praegen glatter Bleche oder Bänder. Allgemein betraegt die Blechdicke von minimal 0.3 mm bis maximal 5 mm. Das Standardformat der Bleche ist 2000x1000 mm, jedoch ist es moeglich, zahlreiche andere Abmessungen zu liefern. Die Waffelbleche werden eingesetzt fuer Laufstege, Treppenstufen, Bodenbelaege, Wanddekorationen usw. in der Industrie und auch im Ausstellungsgewerbe.

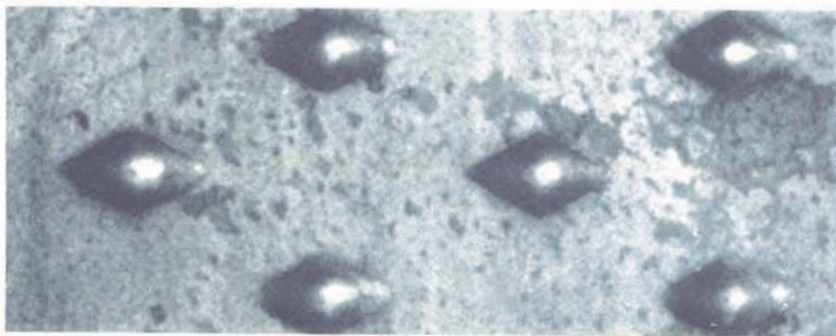
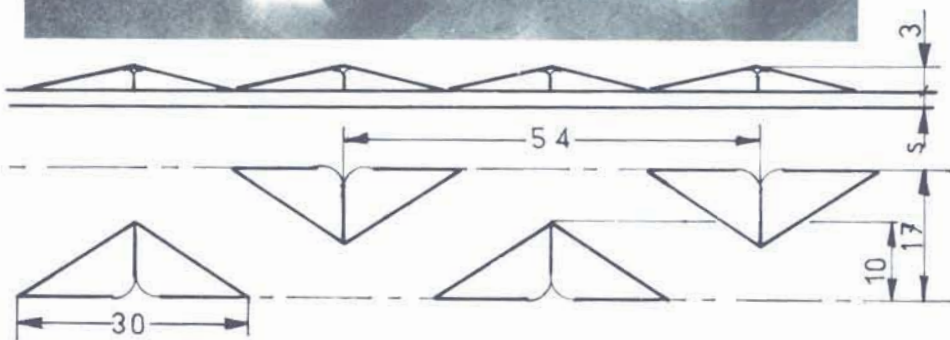
*Nos TOLES GAUFFREES sont obtenues au moyen de poinçonnement sur des normales toles planes ou sur des bandes. L'épaisseur varie généralement de mm. 0,30 jusqu'à mm. 5. Le format standard est celui de 2000x1000 mm., cependant elles peuvent être exécutées en plusieurs autres formats. Les toles gaufrées trouvent utilisation pour les marches, pavage, etc. dans l'industrie et aussi dans la décoration d'intérieurs.*



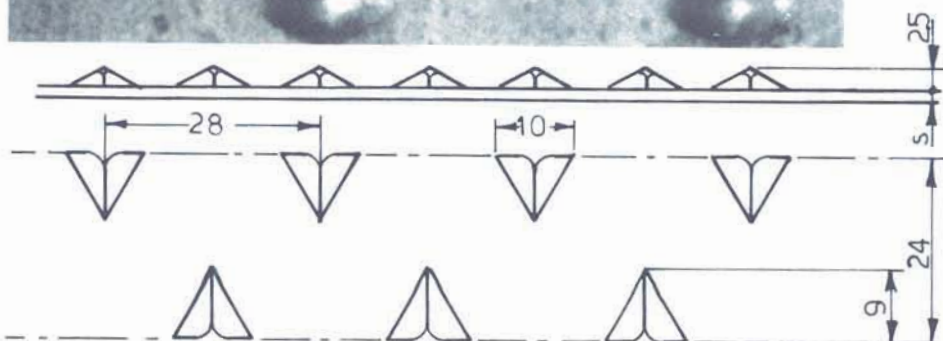
B1



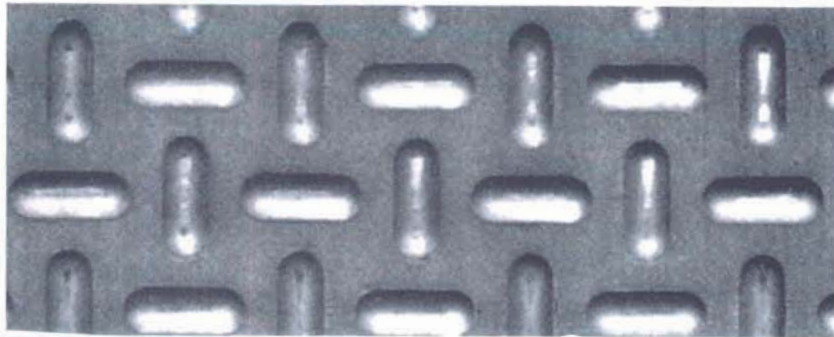
B2



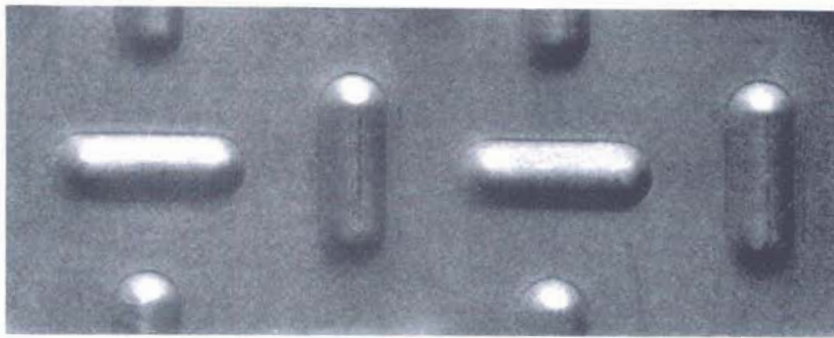
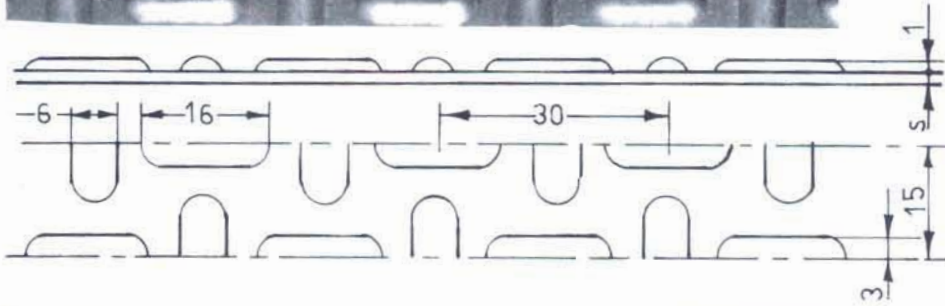
B3



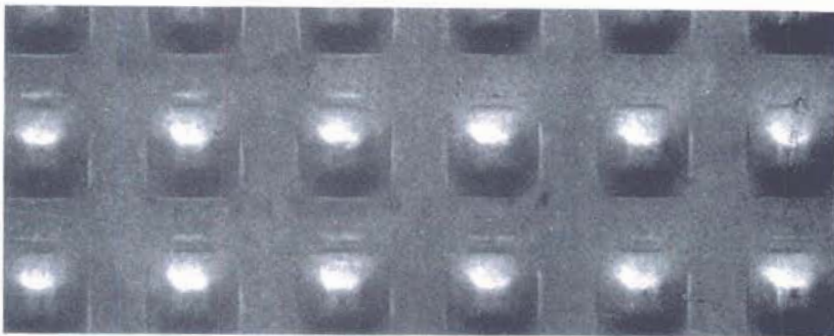
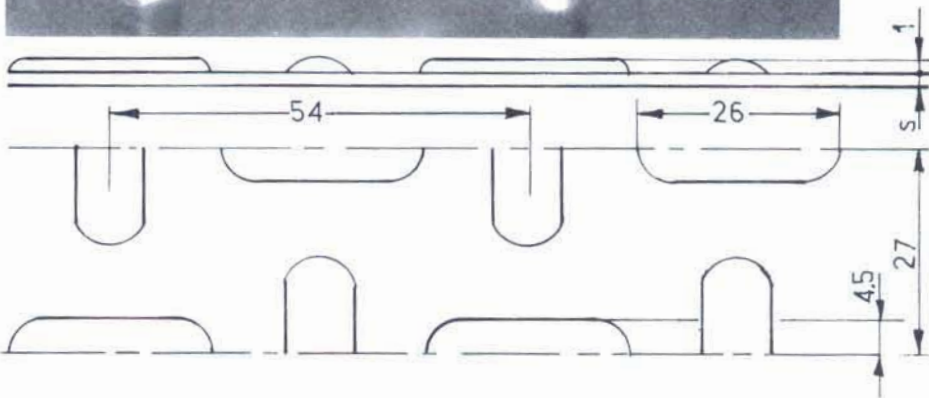




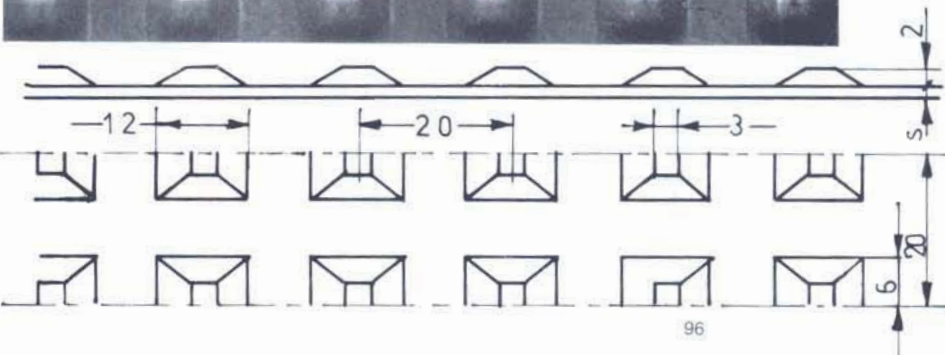
B4



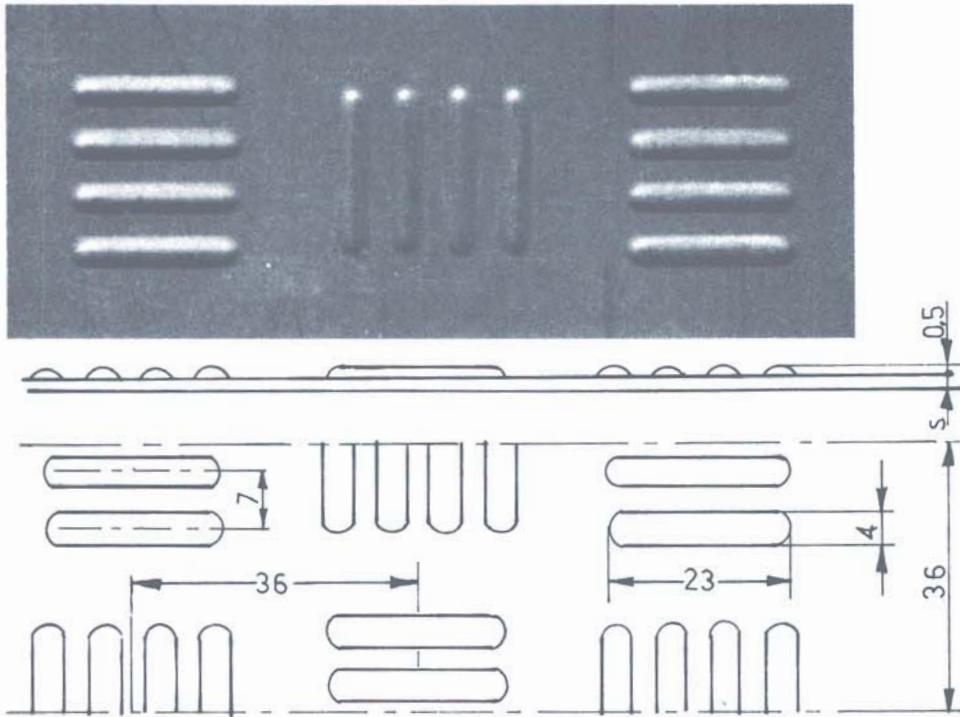
B5



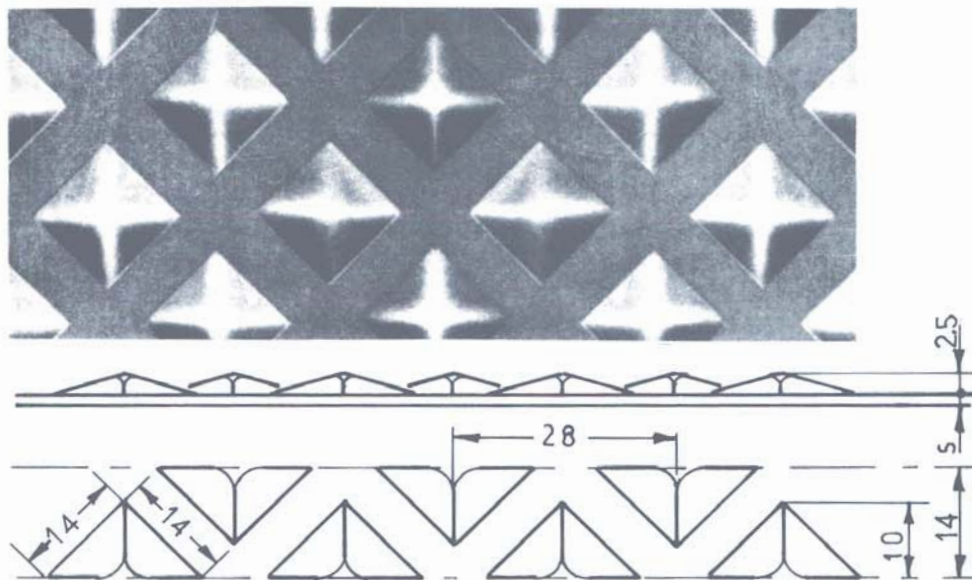
B6



B7



B8



B9

